



NATA LIGHTING CO.,LTD.
www.nata.cn
Email:info@nata.com
Tel:+86-750-3770000 Fax:+86-750-3771111
Address:380JinOu Road,GaoXin Zone,Jiang Men City,Guangdong,China

NT

LumCAT: 2-2641-L
Luminaire: 92.70.411.00
LampCAT: Fortimo_SLM_C_1205
Ballast type: AC
Report No: 20231027-B022 Voltage(V): 35.0800
Test No: 20231027-C022 Current(A): 0.4010
Number of Lamps: 1 Power (W): 14.0670
Lamp flux(lm): 2255.2 PF: 0.0000
Length(mm): 0 Width(mm): 0
Phm Type: C Height(mm): 0

Photometric Results

Lumens(lm): 2078.74, Efficiency(%): 92.18% , Luminous Efficacy(lm/W): 147.77
Central intensity(cd): 4763.592, Maximum intensity(cd): 4763.592
Angle of maximum intensity: C=0.0 γ =0.0
Beam Angle(50%Imax): [C0/180]Total=35.8
[C90/270]Total=35.8
Field angle(10%Imax): [C0/180]Total=64.8
[C90/270]Total=64.8
Maximum s/h(1/2): C0_180=0.58 C90_270=0.58
Maximum s/h(1/4): C0_180=0.60 C90_270=0.60
Up flux rate of lamp(%): 0.00%
Down flux rate of lamp(%): 92.18%
Up flux rate of LUM(%): - -
Down flux rate of LUM(%): 100.00%
CIE Type : Direct lighting
Output flux ratio in π solid angle : 98.031%

Equipment: GMS1980
Temperature(°C): 0.0

Date: 2023/10/27
Humidity(%): 0.0%

Operator: NT07
Distance(m): 7.44

$\gamma(^{\circ})$	Average I(cd)	Zonal F(lm)	Sum F(lm)	Eff Flux(%)	Eff Sum(%)
0.0	4763.592	0.000	0	0.00%	0.00%
1.0	4753.836	4.554	4.554	0.20%	0.22%
2.0	4721.316	13.600	18.154	0.60%	0.87%
3.0	4671.982	22.466	40.619	1.00%	1.95%
4.0	4590.059	31.003	71.622	1.37%	3.45%
5.0	4499.833	39.104	110.726	1.73%	5.33%
6.0	4387.949	46.708	157.434	2.07%	7.57%
7.0	4258.006	53.665	211.099	2.38%	10.16%
8.0	4112.980	59.910	271.009	2.66%	13.04%
9.0	3954.738	65.384	336.393	2.90%	16.18%
10.0	3793.036	70.115	406.508	3.11%	19.56%
11.0	3625.799	74.129	480.637	3.29%	23.12%
12.0	3446.661	77.312	557.95	3.43%	26.84%
13.0	3258.390	79.572	637.522	3.53%	30.67%
14.0	3086.724	81.217	718.738	3.60%	34.58%
15.0	2917.896	82.434	801.173	3.66%	38.54%
16.0	2728.310	82.733	883.905	3.67%	42.52%
17.0	2550.140	82.200	966.105	3.64%	46.48%
18.0	2372.040	81.156	1047.261	3.60%	50.38%
19.0	2194.839	79.454	1126.715	3.52%	54.20%
20.0	2019.092	77.127	1203.842	3.42%	57.91%
21.0	1838.708	74.078	1277.92	3.28%	61.48%
22.0	1678.736	70.685	1348.604	3.13%	64.88%
23.0	1507.209	66.850	1415.454	2.96%	68.09%
24.0	1343.549	62.328	1477.782	2.76%	71.09%
25.0	1196.911	57.765	1535.546	2.56%	73.87%
26.0	1105.965	54.360	1589.906	2.41%	76.48%
27.0	989.266	51.260	1641.166	2.27%	78.95%
28.0	880.939	47.350	1688.516	2.10%	81.23%
29.0	782.015	43.508	1732.023	1.93%	83.32%
30.0	680.669	39.492	1771.515	1.75%	85.22%
31.0	590.886	35.386	1806.901	1.57%	86.92%
32.0	506.624	31.442	1838.343	1.39%	88.44%
33.0	429.627	27.582	1865.926	1.22%	89.76%
34.0	361.805	23.951	1889.877	1.06%	90.91%
35.0	297.387	20.472	1910.349	0.91%	91.90%
36.0	254.564	17.574	1927.923	0.78%	92.74%
37.0	220.390	15.490	1943.413	0.69%	93.49%

$\gamma(^{\circ})$	Average I(cd)	Zonal F(lm)	Sum F(lm)	Eff Flux(%)	Eff Sum(%)
38.0	170.690	13.054	1956.467	0.58%	94.12%
39.0	123.778	10.051	1966.518	0.45%	94.60%
40.0	100.294	7.815	1974.333	0.35%	94.98%
41.0	81.979	6.491	1980.824	0.29%	95.29%
42.0	69.434	5.501	1986.325	0.24%	95.55%
43.0	60.391	4.809	1991.134	0.21%	95.79%
44.0	53.222	4.288	1995.422	0.19%	95.99%
45.0	48.109	3.894	1999.316	0.17%	96.18%
46.0	44.013	3.603	2002.919	0.16%	96.35%
47.0	40.602	3.365	2006.284	0.15%	96.51%
48.0	37.585	3.161	2009.445	0.14%	96.67%
49.0	34.935	2.978	2012.423	0.13%	96.81%
50.0	32.783	2.823	2015.246	0.13%	96.95%
51.0	30.770	2.689	2017.935	0.12%	97.07%
52.0	29.005	2.565	2020.5	0.11%	97.20%
53.0	27.442	2.455	2022.956	0.11%	97.32%
54.0	25.926	2.352	2025.308	0.10%	97.43%
55.0	24.722	2.261	2027.569	0.10%	97.54%
56.0	23.546	2.181	2029.75	0.10%	97.64%
57.0	22.598	2.110	2031.86	0.09%	97.74%
58.0	21.595	2.044	2033.903	0.09%	97.84%
59.0	20.758	1.980	2035.883	0.09%	97.94%
60.0	19.969	1.924	2037.807	0.09%	98.03%
61.0	19.298	1.874	2039.681	0.08%	98.12%
62.0	18.661	1.829	2041.51	0.08%	98.21%
63.0	18.045	1.785	2043.296	0.08%	98.29%
64.0	17.506	1.744	2045.04	0.08%	98.38%
65.0	17.028	1.709	2046.749	0.08%	98.46%
66.0	16.544	1.675	2048.424	0.07%	98.54%
67.0	16.053	1.639	2050.063	0.07%	98.62%
68.0	15.603	1.604	2051.667	0.07%	98.70%
69.0	15.181	1.570	2053.237	0.07%	98.77%
70.0	14.724	1.536	2054.773	0.07%	98.85%
71.0	14.309	1.501	2056.274	0.07%	98.92%
72.0	13.894	1.466	2057.74	0.07%	98.99%
73.0	13.513	1.433	2059.173	0.06%	99.06%
74.0	13.119	1.400	2060.573	0.06%	99.13%
75.0	12.731	1.366	2061.939	0.06%	99.19%

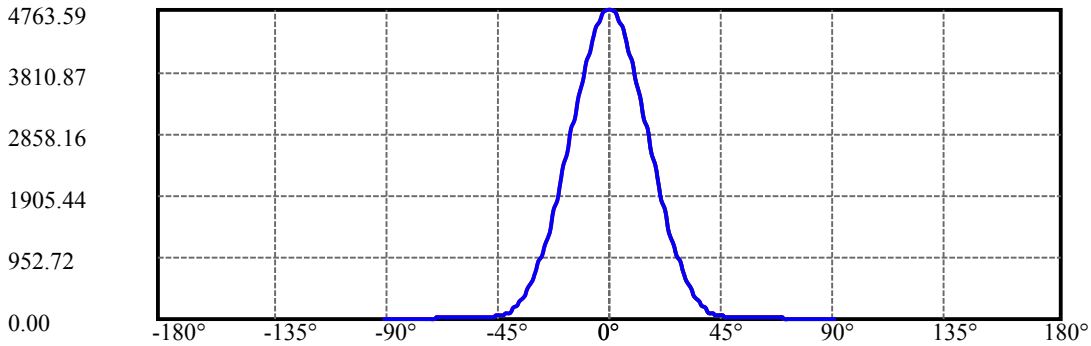
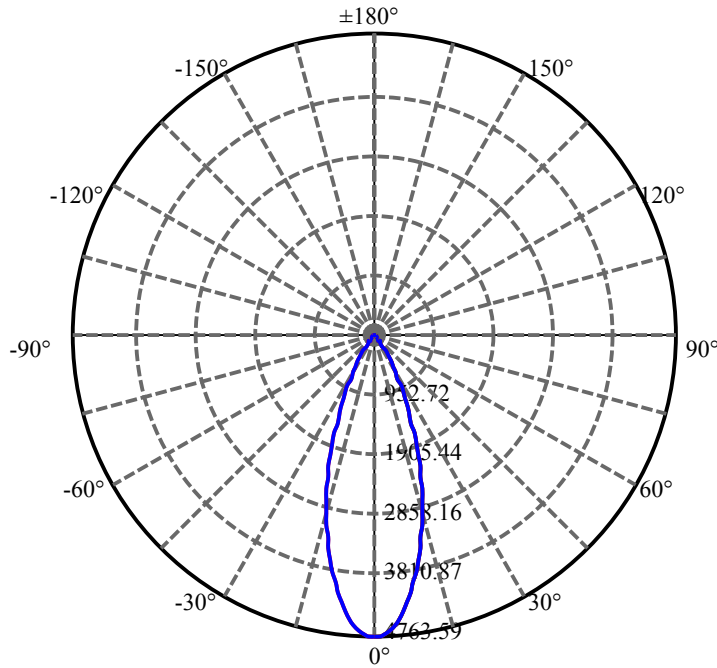
$\gamma(^{\circ})$	Average I(cd)	Zonal F(lm)	Sum F(lm)	Eff Flux(%)	Eff Sum(%)
76.0	12.351	1.331	2063.271	0.06%	99.26%
77.0	11.998	1.298	2064.569	0.06%	99.32%
78.0	11.624	1.265	2065.833	0.06%	99.38%
79.0	11.292	1.231	2067.064	0.05%	99.44%
80.0	10.953	1.199	2068.264	0.05%	99.50%
81.0	10.642	1.168	2069.432	0.05%	99.55%
82.0	10.296	1.135	2070.567	0.05%	99.61%
83.0	10.005	1.104	2071.671	0.05%	99.66%
84.0	9.763	1.077	2072.748	0.05%	99.71%
85.0	9.535	1.053	2073.801	0.05%	99.76%
86.0	9.313	1.030	2074.831	0.05%	99.81%
87.0	9.113	1.008	2075.839	0.04%	99.86%
88.0	8.898	0.987	2076.826	0.04%	99.91%
89.0	8.697	0.964	2077.79	0.04%	99.95%
90.0	8.621	0.950	2078.74	0.04%	100.00%

ZONAL LUMEN SUMMARY

Zone	Lumens	%Lamp	%Fixt
0-30	1771.52	78.55%	85.22%
0-40	1974.33	87.55%	94.98%
0-60	2037.81	90.36%	98.03%
0-90	2077.79	92.13%	99.95%
0-120	2077.79	92.13%	99.95%
0-180	2078.74	92.18%	100.00%
60-90	39.98	1.77%	1.92%
90-120	0.00	0.00%	0.00%
90-130	0.00	0.00%	0.00%
90-150	0.00	0.00%	0.00%
90-180	0.00	0.00%	0.00%
0-27.46	1662.99	73.74%	80.00%

ZONAL LUMEN SUMMARY

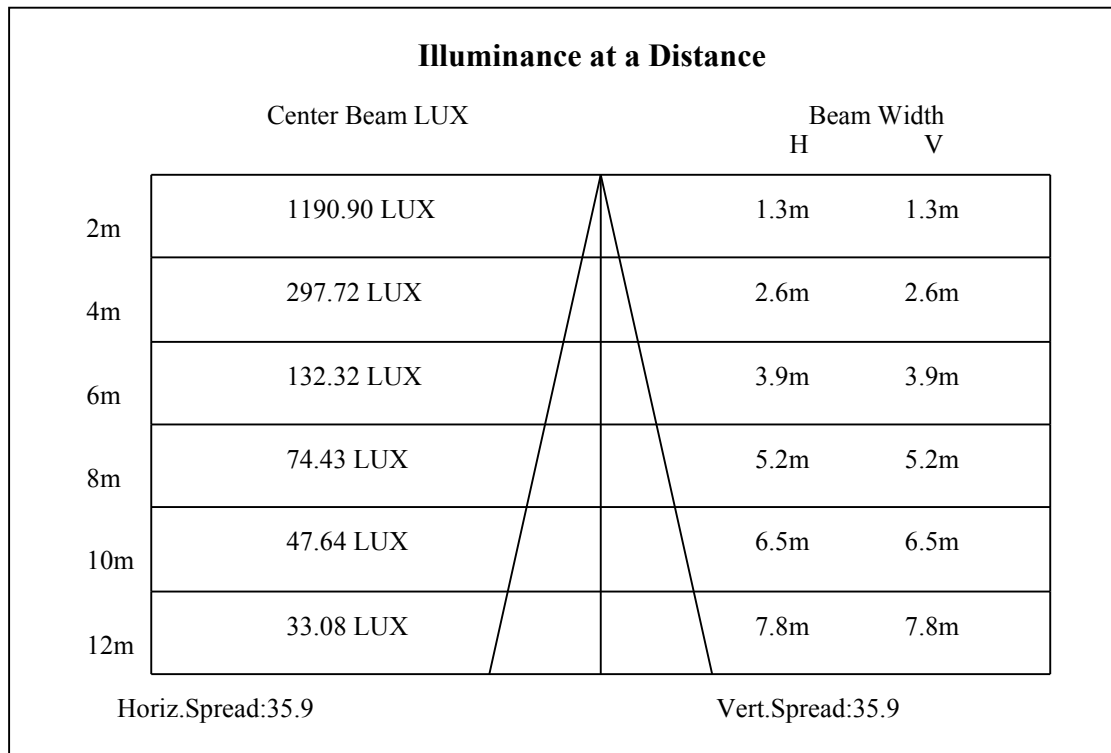
0-10	406.51
10-20	797.33
20-30	567.67
30-40	202.82
40-50	40.91
50-60	22.56
60-70	16.97
70-80	13.49
80-90	9.53
90-100	0.00
100-110	0.00
110-120	0.00
120-130	0.00
130-140	0.00
140-150	0.00
150-160	0.00
160-170	0.00
170-180	0.00

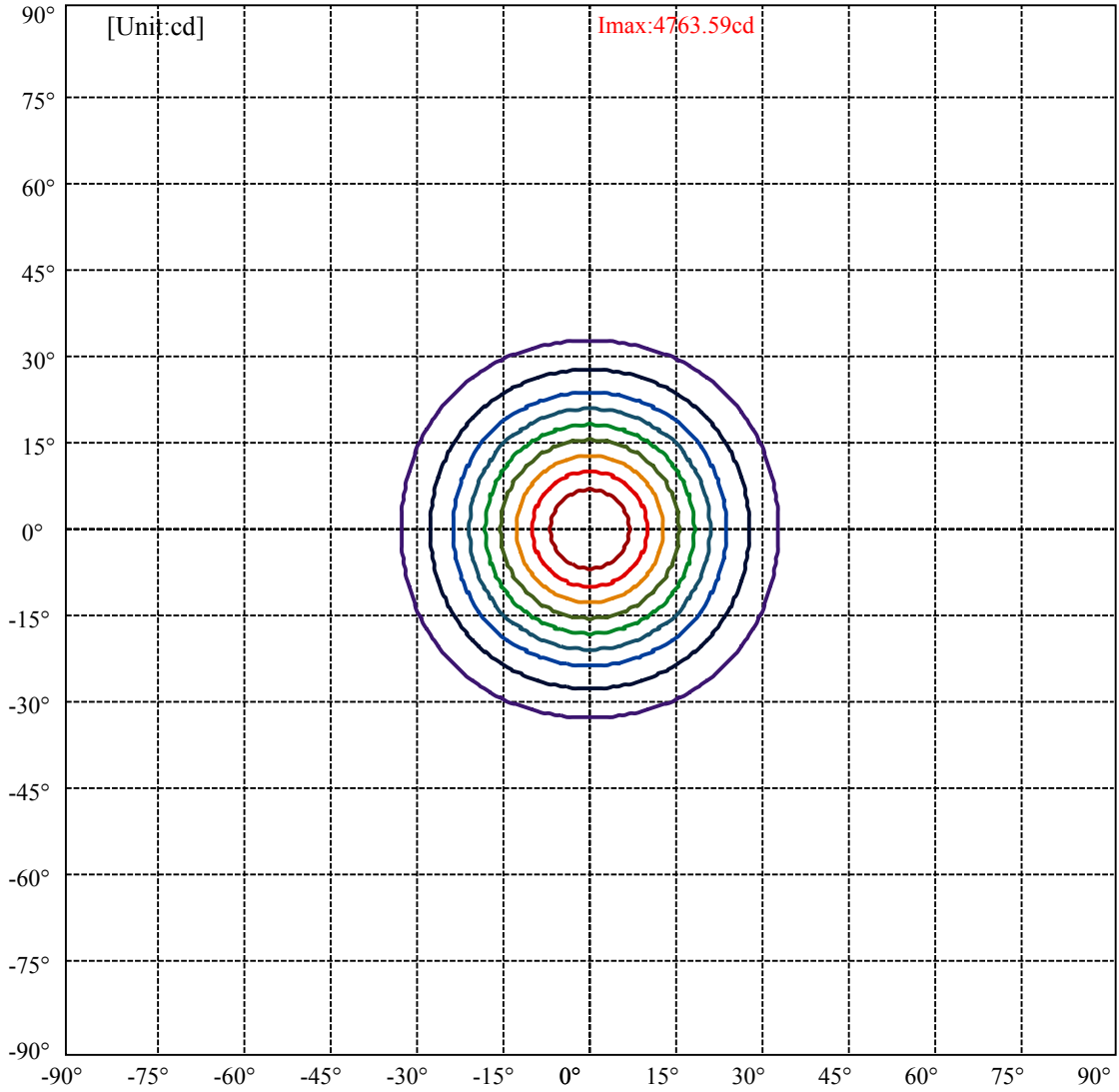


C0(Max): —————
C0/C180: —————
C90/C270: —————

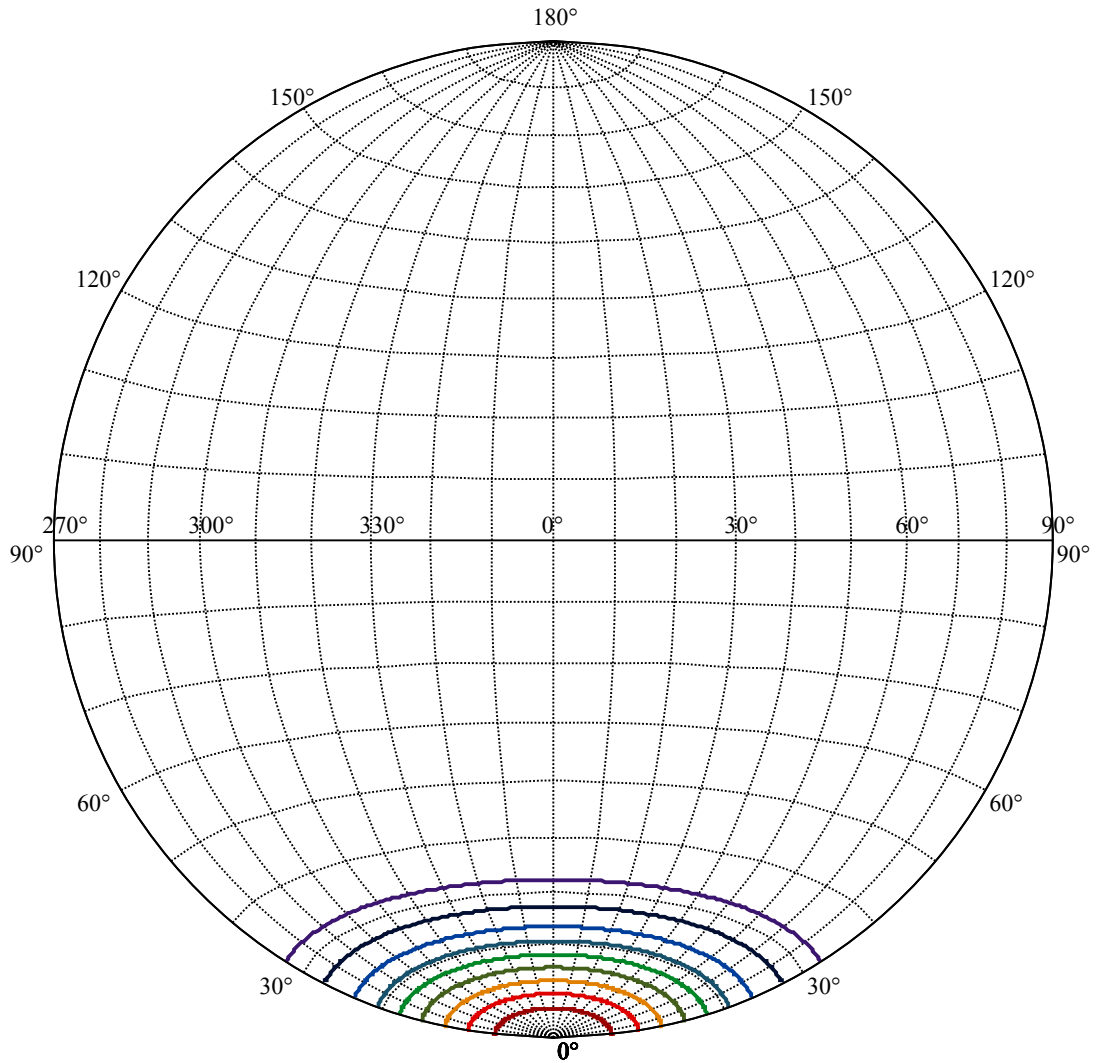
Field angle(10%Imax):C0/180Left:32.4 Right:32.4
:C90/270Left:32.4 Right:32.4

Beam Angle(50%Imax):C0/180Left:17.9 Right:17.9
:C90/270Left:17.9 Right:17.9





(10%Imax) 476.359	—
(20%Imax) 952.718	—
(30%Imax) 1429.08	—
(40%Imax) 1905.44	—
(50%Imax) 2381.8	—
(60%Imax) 2858.16	—
(70%Imax) 3334.51	—
(80%Imax) 3810.87	—
(90%Imax) 4287.23	—



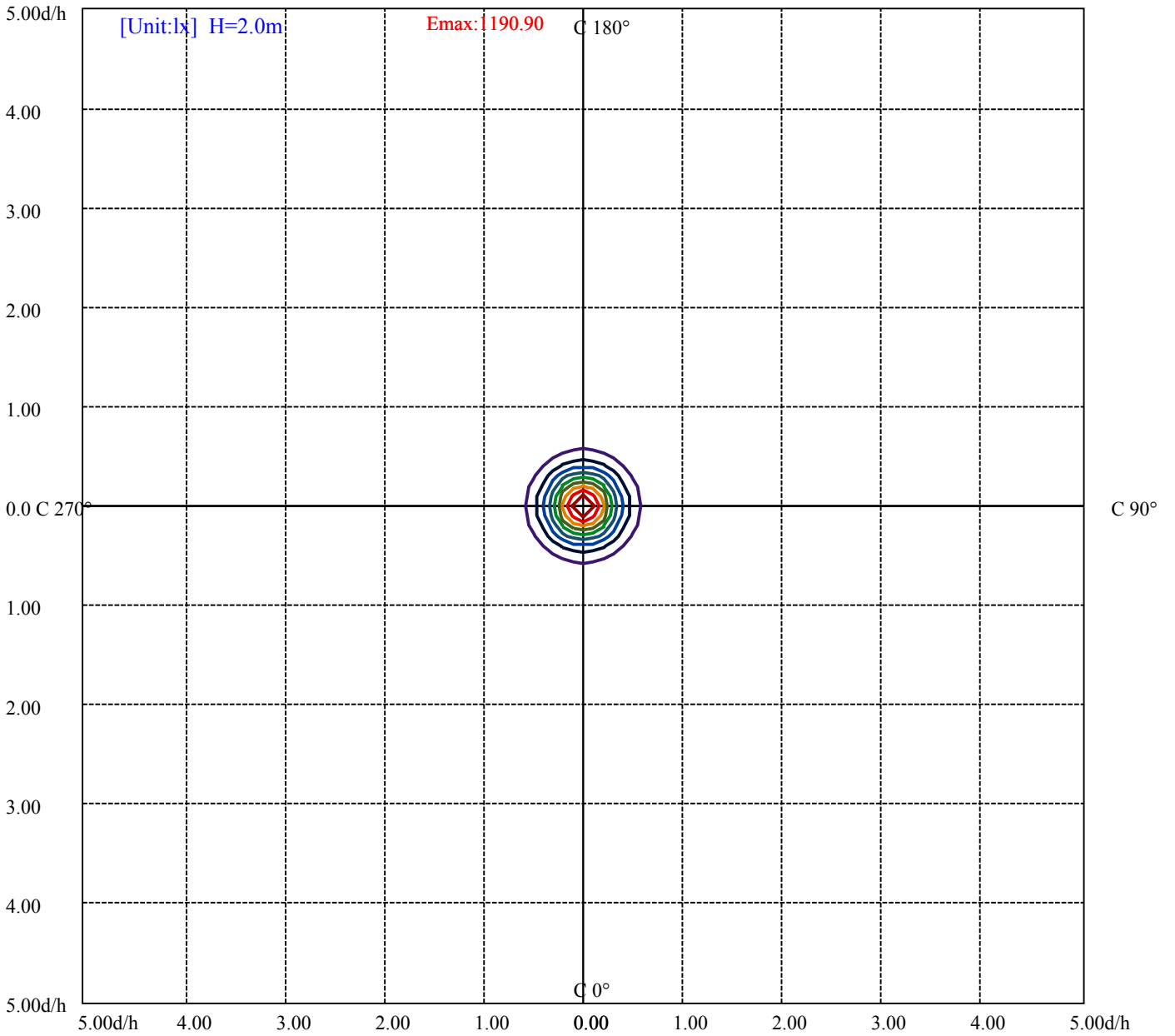
House

[Unit:cd]

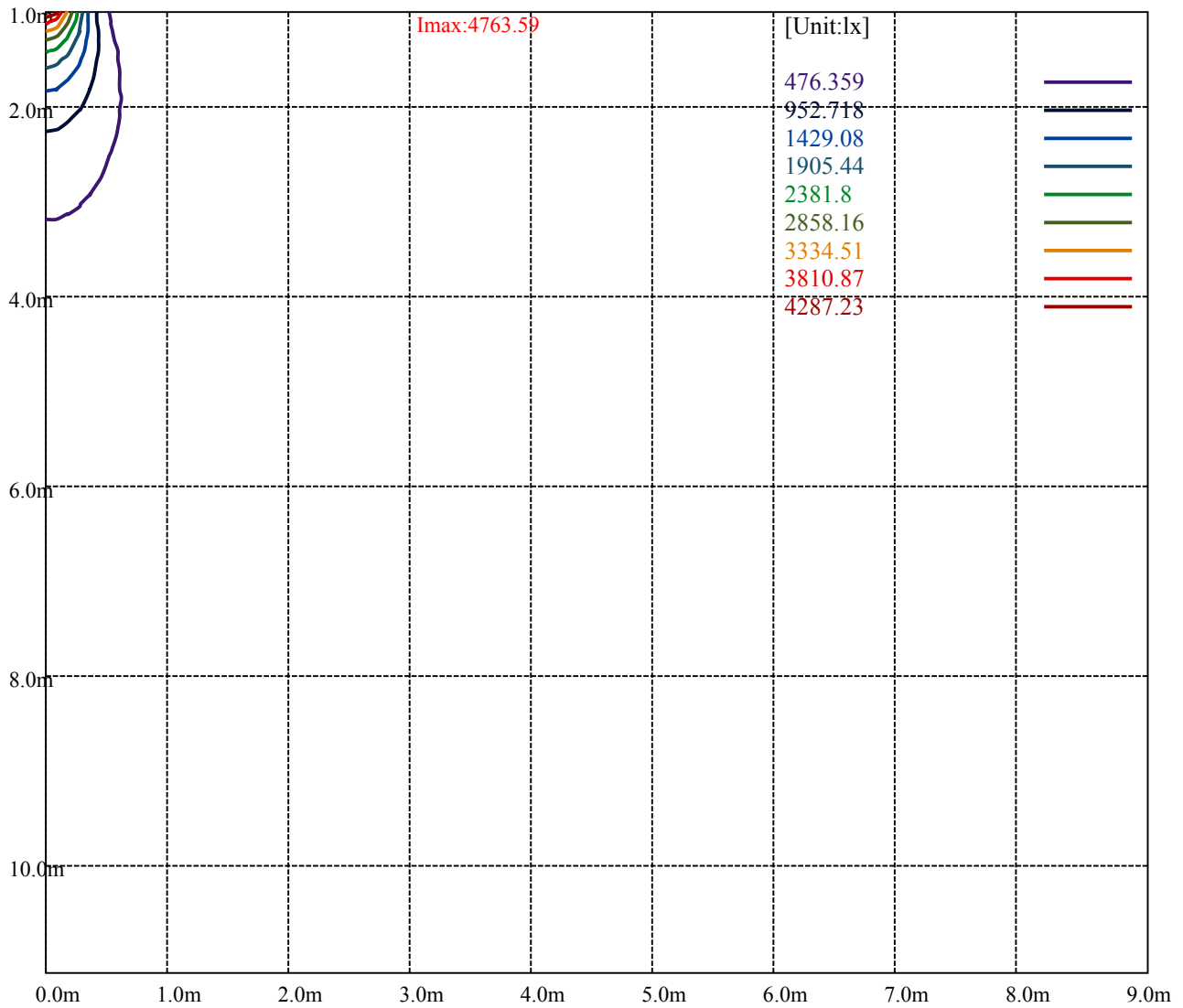
Road

Imax:4763.59

(10%Imax) 476.359	—
(20%Imax) 952.718	—
(30%Imax) 1429.08	—
(40%Imax) 1905.44	—
(50%Imax) 2381.8	—
(60%Imax) 2858.16	—
(70%Imax) 3334.51	—
(80%Imax) 3810.87	—
(90%Imax) 4287.23	—



(10%Emax) 119.0898	—
(20%Emax) 238.1795	—
(30%Emax) 357.27	—
(40%Emax) 476.36	—
(50%Emax) 595.45	—
(60%Emax) 714.5375	—
(70%Emax) 833.6275	—
(80%Emax) 952.7175	—
(90%Emax) 1071.807	—



Luminance Table

γ	45	50	55	60	65	70	75	80	85
C0	0	0	0	0	0	0	0	0	0
C45	0	0	0	0	0	0	0	0	0
C90	0	0	0	0	0	0	0	0	0

L(Hor)(65)	L(Ver)(65)	L45(65)	L(Hor)(75)	L(Ver)(75)	L45(75)	L(Hor)(85)	L(Ver)(85)	L45(85)
0	0	0	0	0	0	0	0	0

Glare Table

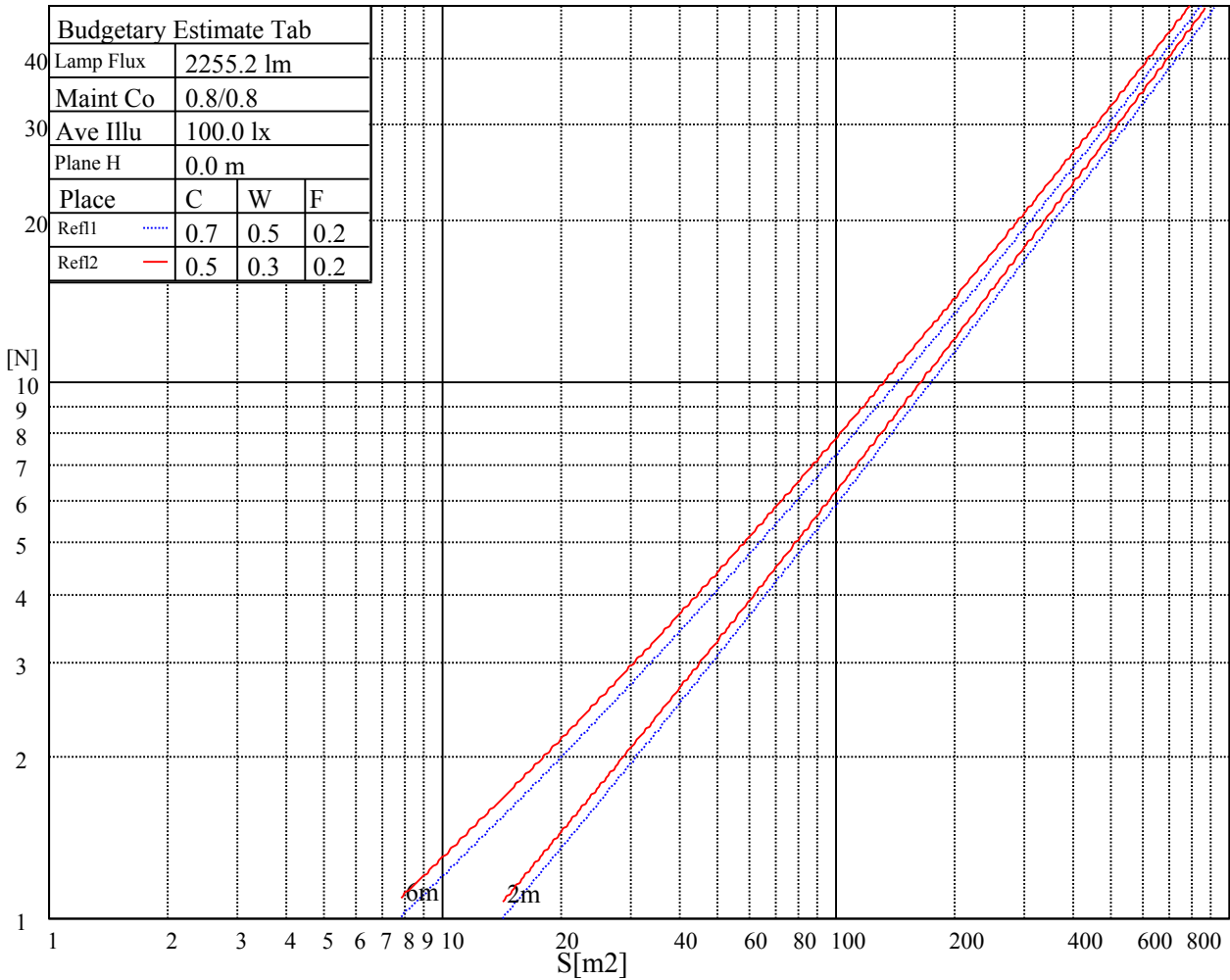
Glare	Quality	Service Values Illuminance(lx)							
1.15	A	2000	1000	500	<=300				
1.5	B		2000	1000	500	<=300			
1.85	C			2000	1000	500	<=300		
2.2	D				2000	1000	500	<=300	
2.55	E					2000	1000	500	<=300
		a	b	c	d	e	f	g	h

Luminance Limiting Curve

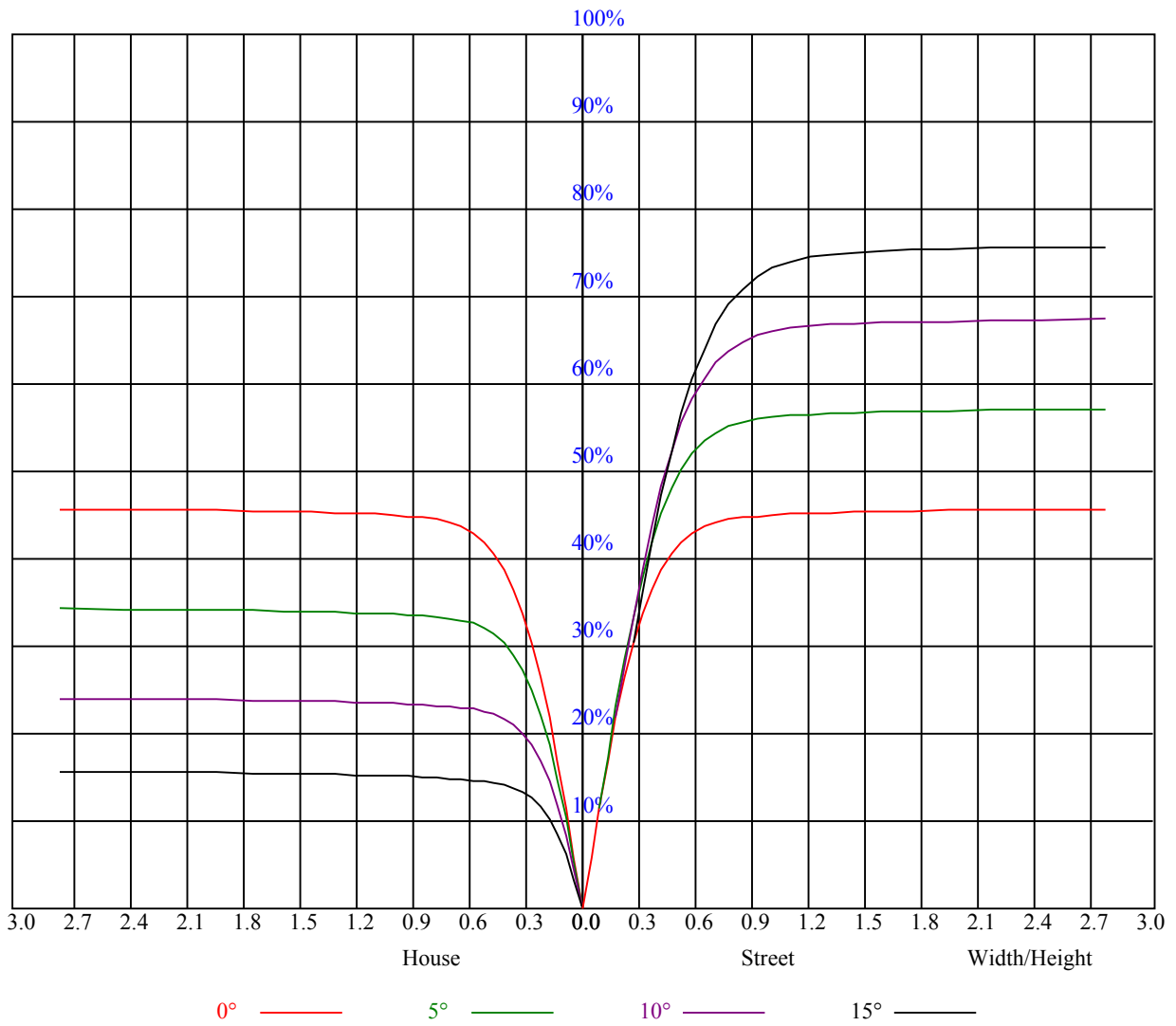


Illumination assessment according UGR											
Rf of Ceiling	70	70	50	50	30	70	70	50	50	30	
Rf of Wall	50	30	50	30	30	50	30	50	30	30	
Rf of Floor	20	20	20	20	20	20	20	20	20	20	
Room dimensions		Viewed crosswise					Viewed endwise				
X	Y										
2H	2H	非数字	非数字	非数字	非数字	非数字	非数字	非数字	非数字	非数字	
	3H	非数字	非数字	非数字	非数字	非数字	非数字	非数字	非数字	非数字	
	4H	非数字	非数字	非数字	非数字	非数字	非数字	非数字	非数字	非数字	
	6H	非数字	非数字	非数字	非数字	非数字	非数字	非数字	非数字	非数字	
	8H	非数字	非数字	非数字	非数字	非数字	非数字	非数字	非数字	非数字	
4H	12H	非数字	非数字	非数字	非数字	非数字	非数字	非数字	非数字	非数字	
	2H	非数字	非数字	非数字	非数字	非数字	非数字	非数字	非数字	非数字	
	3H	非数字	非数字	非数字	非数字	非数字	非数字	非数字	非数字	非数字	
	4H	非数字	非数字	非数字	非数字	非数字	非数字	非数字	非数字	非数字	
	6H	非数字	非数字	非数字	非数字	非数字	非数字	非数字	非数字	非数字	
8H	8H	非数字	非数字	非数字	非数字	非数字	非数字	非数字	非数字	非数字	
	12H	非数字	非数字	非数字	非数字	非数字	非数字	非数字	非数字	非数字	
	4H	非数字	非数字	非数字	非数字	非数字	非数字	非数字	非数字	非数字	
	6H	非数字	非数字	非数字	非数字	非数字	非数字	非数字	非数字	非数字	
	8H	非数字	非数字	非数字	非数字	非数字	非数字	非数字	非数字	非数字	
12H	12H	非数字	非数字	非数字	非数字	非数字	非数字	非数字	非数字	非数字	
	4H	非数字	非数字	非数字	非数字	非数字	非数字	非数字	非数字	非数字	
	6H	非数字	非数字	非数字	非数字	非数字	非数字	非数字	非数字	非数字	
	8H	非数字	非数字	非数字	非数字	非数字	非数字	非数字	非数字	非数字	
Variation with the observer position at spacings:											
S = 1.0H		非数字/非数字					非数字/非数字				
S = 1.5H		非数字/非数字					非数字/非数字				
S = 2.0H		非数字/非数字					非数字/非数字				
Standard tables:		BK0					BK0				
Uncorrected UGR		负无穷大					负无穷大				

UGR calculation is based on CIE Publ. 117 ,S/H = 0.25



RHOCC	80			70			50			30			10			0
RHOW	50	30	10	50	30	10	50	30	10	50	30	10	50	30	10	0
RCR	COEFFICIENTS OF UTILIZATION RHOFC=20 CU															
0	1.10	1.10	1.10	1.07	1.07	1.07	1.02	1.02	1.02	0.98	0.98	0.98	0.94	0.94	0.94	0.92
1	1.03	1.00	0.98	1.01	0.99	0.97	0.97	0.95	0.94	0.93	0.92	0.91	0.90	0.89	0.89	0.87
2	0.96	0.93	0.90	0.95	0.92	0.89	0.92	0.89	0.87	0.89	0.87	0.85	0.87	0.85	0.84	0.82
3	0.91	0.87	0.84	0.90	0.86	0.83	0.87	0.84	0.82	0.85	0.83	0.80	0.83	0.81	0.79	0.78
4	0.86	0.82	0.78	0.85	0.81	0.78	0.83	0.80	0.77	0.81	0.78	0.76	0.80	0.77	0.75	0.74
5	0.82	0.77	0.74	0.81	0.77	0.73	0.79	0.76	0.73	0.78	0.75	0.72	0.77	0.74	0.71	0.70
6	0.78	0.73	0.70	0.77	0.73	0.69	0.76	0.72	0.69	0.75	0.71	0.69	0.74	0.70	0.68	0.67
7	0.74	0.70	0.66	0.74	0.69	0.66	0.73	0.69	0.66	0.72	0.68	0.65	0.71	0.67	0.65	0.64
8	0.71	0.66	0.63	0.71	0.66	0.63	0.70	0.66	0.63	0.69	0.65	0.62	0.68	0.65	0.62	0.61
9	0.68	0.63	0.60	0.68	0.63	0.60	0.67	0.63	0.60	0.66	0.62	0.60	0.65	0.62	0.60	0.58
10	0.65	0.61	0.58	0.65	0.61	0.58	0.64	0.60	0.57	0.64	0.60	0.57	0.63	0.60	0.57	0.56



Intensity data(cd)

C/γ(°)	0.0	1.0	2.0	3.0	4.0	5.0	6.0	7.0	8.0
0.0	4768.16	4731.07	4672.40	4606.53	4477.00	4377.92	4260.01	4090.63	3948.93
45.0	4760.96	4769.27	4746.02	4687.34	4624.24	4527.37	4406.70	4289.90	4149.31
90.0	4766.50	4736.61	4677.93	4615.38	4506.34	4384.56	4270.53	4118.31	3964.42
135.0	4758.75	4760.41	4731.07	4666.31	4591.58	4496.93	4385.67	4281.60	4116.09
180.0	4768.16	4756.53	4743.80	4727.75	4665.20	4596.01	4508.00	4399.50	4255.03
225.0	4760.96	4742.70	4713.91	4657.45	4586.05	4509.10	4365.74	4241.75	4109.45
270.0	4766.50	4769.82	4758.20	4728.30	4671.29	4602.10	4511.32	4395.63	4256.69
315.0	4758.75	4764.28	4727.20	4686.79	4598.78	4504.68	4395.63	4246.73	4103.92
360.0	4768.16	4731.07	4672.40	4606.53	4477.00	4377.92	4260.01	4090.63	3948.93
C/γ(°)	9.0	10.0	11.0	12.0	13.0	14.0	15.0	16.0	17.0
0.0	3797.26	3607.39	3440.23	3278.59	3063.82	2903.30	2733.91	2559.00	2348.10
45.0	3966.64	3827.70	3677.14	3461.26	3294.09	3119.73	2963.08	2737.24	2576.71
90.0	3782.31	3624.55	3457.94	3292.43	3087.07	2919.90	2749.97	2538.52	2369.13
135.0	3966.64	3822.17	3628.43	3460.15	3253.13	3086.52	2923.22	2720.08	2544.60
180.0	4130.49	3973.83	3788.95	3639.50	3435.24	3269.74	3107.55	2946.47	2738.34
225.0	3915.71	3754.63	3600.20	3397.05	3226.01	3068.25	2861.78	2702.36	2530.77
270.0	4118.86	3966.64	3803.35	3602.41	3436.35	3260.88	3098.14	2884.48	2726.16
315.0	3960.00	3767.37	3610.16	3441.89	3271.40	3065.48	2905.51	2738.34	2567.30
360.0	3797.26	3607.39	3440.23	3278.59	3063.82	2903.30	2733.91	2559.00	2348.10
C/γ(°)	18.0	19.0	20.0	21.0	22.0	23.0	24.0	25.0	26.0
0.0	2184.25	2017.09	1852.68	1660.61	1511.15	1243.80	1096.33	1096.33	963.54
45.0	2413.97	2248.46	2039.23	1882.02	1725.93	1535.51	1391.59	1223.31	1103.75
90.0	2205.29	2005.46	1849.36	1694.37	1512.81	1372.22	1090.52	1090.52	983.97
135.0	2382.97	2221.89	2013.21	1849.92	1704.34	1557.10	1379.41	1249.88	1128.66
180.0	2565.64	2393.49	2220.23	2008.78	1848.26	1692.71	1548.24	1378.86	1252.10
225.0	2358.06	2149.38	1986.09	1827.22	1645.66	1507.83	1371.66	1101.04	1101.04
270.0	2510.84	2335.92	2168.75	1966.71	1811.17	1660.61	1515.58	1346.20	1225.53
315.0	2355.30	2187.02	2023.17	1820.03	1670.57	1487.90	1355.06	1089.14	1089.14
360.0	2184.25	2017.09	1852.68	1660.61	1511.15	1243.80	1096.33	1096.33	963.54
C/γ(°)	27.0	28.0	29.0	30.0	31.0	32.0	33.0	34.0	35.0
0.0	864.68	771.80	681.62	575.62	497.68	426.44	362.40	289.22	237.13
45.0	991.94	862.96	767.75	677.53	593.94	515.90	424.56	361.46	304.44
90.0	876.36	779.88	686.61	577.78	497.96	425.39	346.62	289.83	227.56
135.0	988.06	884.00	787.68	676.42	590.07	492.65	423.46	362.57	305.00
180.0	1107.07	998.03	900.05	782.15	693.03	605.01	519.77	430.65	367.55
225.0	992.32	864.68	768.92	680.46	572.91	493.59	420.02	354.82	283.30
270.0	1110.39	1001.35	874.03	778.83	691.92	583.98	502.06	432.87	352.05
315.0	983.30	884.83	789.45	696.57	589.57	510.03	438.12	373.03	302.06
360.0	864.68	771.80	681.62	575.62	497.68	426.44	362.40	289.22	237.13
C/γ(°)	36.0	37.0	38.0	39.0	40.0	41.0	42.0	43.0	44.0
0.0	191.80	146.35	117.90	96.26	77.11	66.31	58.18	50.81	46.22
45.0	291.16	227.56	153.88	118.90	98.20	82.86	68.80	60.50	54.30
90.0	185.49	151.06	122.88	97.03	82.20	71.02	62.49	54.63	49.65
135.0	279.54	279.54	157.09	127.76	104.62	83.75	71.68	62.49	54.30
180.0	311.09	283.41	283.41	157.37	126.15	97.37	80.93	69.14	58.62
225.0	231.88	188.15	152.00	116.46	95.32	79.54	65.76	57.96	51.09
270.0	295.59	282.30	221.03	149.95	121.06	93.82	78.49	67.37	59.12
315.0	249.98	204.75	157.31	126.48	97.70	81.15	69.14	60.22	52.48
360.0	191.80	146.35	117.90	96.26	77.11	66.31	58.18	50.81	46.22

Intensity data(cd)

C/γ(°)	45.0	46.0	47.0	48.0	49.0	50.0	51.0	52.0	53.0
0.0	42.57	39.41	36.15	33.88	31.83	30.11	28.17	26.79	25.52
45.0	48.21	44.39	41.07	38.19	35.09	32.94	31.11	29.34	27.57
90.0	45.67	41.35	38.47	35.98	33.21	31.27	29.61	27.73	26.40
135.0	49.26	44.34	41.02	38.14	34.98	32.88	31.00	29.28	27.46
180.0	52.75	48.10	43.51	40.41	37.64	34.76	32.66	30.78	29.12
225.0	46.72	43.12	40.08	36.81	34.49	32.44	30.61	28.56	27.07
270.0	51.98	47.44	43.78	39.91	37.25	34.93	32.38	30.61	28.89
315.0	47.71	43.95	40.74	37.36	34.98	32.94	30.61	28.95	27.51
360.0	42.57	39.41	36.15	33.88	31.83	30.11	28.17	26.79	25.52
C/γ(°)	54.0	55.0	56.0	57.0	58.0	59.0	60.0	61.0	62.0
0.0	24.13	23.08	21.92	21.15	20.37	19.54	18.93	18.38	17.88
45.0	26.18	24.96	23.75	22.75	21.64	20.87	20.15	19.43	18.65
90.0	25.13	23.91	22.81	21.98	21.09	20.15	19.48	18.82	18.27
135.0	26.07	24.91	23.86	22.92	21.81	20.98	20.04	19.37	18.76
180.0	27.29	26.02	24.74	23.69	22.53	21.70	20.70	19.98	19.32
225.0	25.74	24.52	23.36	22.36	21.37	20.59	19.87	19.10	18.54
270.0	27.07	25.74	24.63	23.53	22.36	21.48	20.70	20.04	19.21
315.0	25.79	24.63	23.30	22.42	21.59	20.76	19.87	19.26	18.65
360.0	24.13	23.08	21.92	21.15	20.37	19.54	18.93	18.38	17.88
C/γ(°)	63.0	64.0	65.0	66.0	67.0	68.0	69.0	70.0	71.0
0.0	17.27	16.83	16.38	16.00	15.44	15.06	14.67	14.12	13.73
45.0	18.10	17.60	17.10	16.50	16.05	15.67	15.22	14.72	14.34
90.0	17.66	17.16	16.72	16.11	15.72	15.17	14.72	14.34	13.95
135.0	18.05	17.55	17.10	16.55	16.11	15.67	15.22	14.72	14.34
180.0	18.60	17.99	17.55	17.10	16.50	16.11	15.67	15.28	14.78
225.0	17.99	17.38	16.94	16.50	16.05	15.50	15.17	14.72	14.34
270.0	18.60	18.05	17.44	16.99	16.38	16.05	15.55	15.17	14.67
315.0	18.10	17.49	16.99	16.61	16.16	15.61	15.22	14.72	14.34
360.0	17.27	16.83	16.38	16.00	15.44	15.06	14.67	14.12	13.73
C/γ(°)	72.0	73.0	74.0	75.0	76.0	77.0	78.0	79.0	80.0
0.0	13.40	13.01	12.62	12.29	11.85	11.57	11.24	10.96	10.52
45.0	13.89	13.45	13.12	12.68	12.34	12.01	11.57	11.29	10.96
90.0	13.51	13.17	12.79	12.45	12.07	11.68	11.35	10.96	10.63
135.0	13.95	13.62	13.12	12.79	12.40	12.01	11.62	11.29	10.96
180.0	14.34	14.00	13.51	13.12	12.73	12.34	12.01	11.62	11.29
225.0	13.84	13.51	13.12	12.68	12.34	12.01	11.57	11.29	10.96
270.0	14.28	13.89	13.56	13.06	12.68	12.34	12.01	11.57	11.29
315.0	13.95	13.45	13.12	12.79	12.40	12.01	11.62	11.35	11.02
360.0	13.40	13.01	12.62	12.29	11.85	11.57	11.24	10.96	10.52
C/γ(°)	81.0	82.0	83.0	84.0	85.0	86.0	87.0	88.0	89.0
0.0	10.30	9.96	9.74	9.47	9.35	9.13	8.91	8.69	8.64
45.0	10.63	10.30	9.96	9.74	9.47	9.24	9.08	8.86	8.64
90.0	10.35	10.07	9.80	9.58	9.30	9.13	8.97	8.75	8.64
135.0	10.63	10.30	9.96	9.74	9.52	9.30	9.08	8.86	8.58
180.0	10.96	10.57	10.24	10.02	9.74	9.52	9.30	9.08	8.86
225.0	10.63	10.24	10.02	9.74	9.58	9.35	9.13	8.91	8.69
270.0	10.96	10.63	10.24	10.02	9.74	9.47	9.30	9.08	8.86
315.0	10.68	10.30	10.07	9.80	9.58	9.35	9.13	8.97	8.69
360.0	10.30	9.96	9.74	9.47	9.35	9.13	8.91	8.69	8.64

Intensity data(cd)

C/γ(°)	90.0
0.0	8.58
45.0	8.58
90.0	8.64
135.0	8.64
180.0	8.69
225.0	8.64
270.0	8.64
315.0	8.58
360.0	8.58